



GluR- δ 1 Polyclonal Antibody

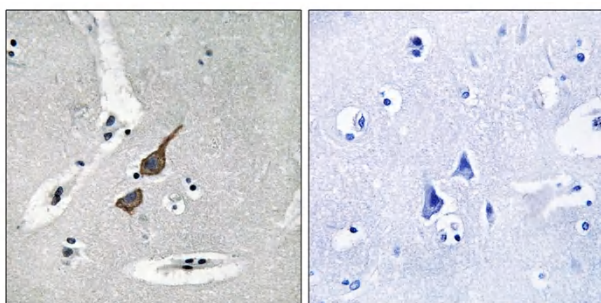
Catalog No	YP-Ab-16426
Isotype	IgG
Reactivity	Human;Mouse;Rat
Applications	WB;IHC;IF;ELISA
Gene Name	GRID1
Protein Name	Glutamate receptor delta-1 subunit
Immunogen	The antiserum was produced against synthesized peptide derived from human GRID1. AA range:831-880
Specificity	GluR- δ 1 Polyclonal Antibody detects endogenous levels of GluR- δ 1 protein.
Formulation	Liquid in PBS containing 50% glycerol, 0.5% BSA and 0.02% sodium azide.
Source	Polyclonal, Rabbit,IgG
Purification	The antibody was affinity-purified from rabbit antiserum by affinity-chromatography using epitope-specific immunogen.
Dilution	WB: 1/500 - 1/2000. IHC: 1/100 - 1/300. ELISA: 1/40000.. IF 1:50-200
Concentration	1 mg/ml
Purity	\geq 90%
Storage Stability	-20°C/1 year
Synonyms	GRID1; KIAA1220; Glutamate receptor delta-1 subunit; GluR delta-1 subunit
Observed Band	95kD
Cell Pathway	Cell membrane ; Multi-pass membrane protein . Cell junction, synapse, postsynaptic cell membrane ; Multi-pass membrane protein .
Tissue Specificity	Brain,Uterus,
Function	function:Receptor for glutamate. L-glutamate acts as an excitatory neurotransmitter at many synapses in the central nervous system. The postsynaptic actions of Glu are mediated by a variety of receptors that are named according to their selective agonists.,similarity:Belongs to the glutamate-gated ion channel (TC 1.A.10) family.,
Background	This gene encodes a subunit of glutamate receptor channels. These channels mediate most of the fast excitatory synaptic transmission in the central nervous system and play key roles in synaptic plasticity.[provided by RefSeq, Jan 2009],
matters needing attention	Avoid repeated freezing and thawing!



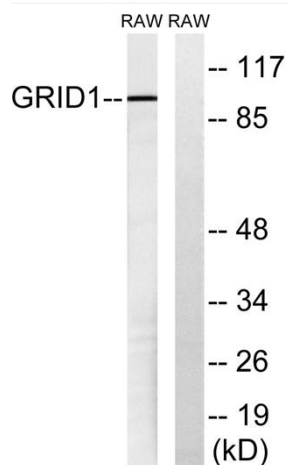
Usage suggestions

This product can be used in immunological reaction related experiments. For more information, please consult technical personnel.

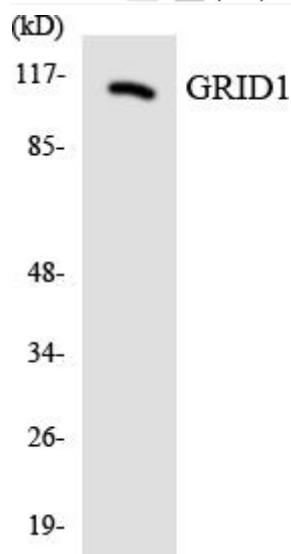
Products Images



Immunohistochemistry analysis of paraffin-embedded human brain tissue, using GRID1 Antibody. The picture on the right is blocked with the synthesized peptide.



Western blot analysis of lysates from RAW264.7 cells, using GRID1 Antibody. The lane on the right is blocked with the synthesized peptide.



Western blot analysis of the lysates from RAW264.7 cells using GRID1 antibody.